

How the Individual Learning Plan (ILP) Supports College/Career-Readiness in Kentucky

by Terry Holliday, Ph.D.
Kentucky Commissioner of Education



American Youth Policy Forum
February 15, 2013



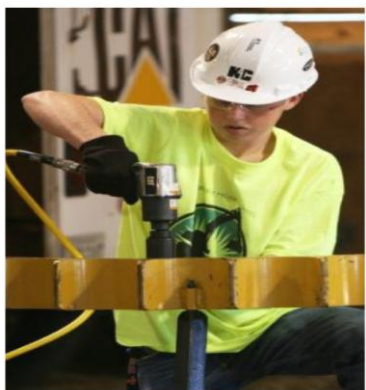
What is College/Career Ready?

College Ready: the level of preparation a first-time student needs in order to succeed in a credit-bearing course at a postsecondary institution.

Succeed is defined as completing entry-level courses at a level of understanding and proficiency that prepares the student for subsequent courses.



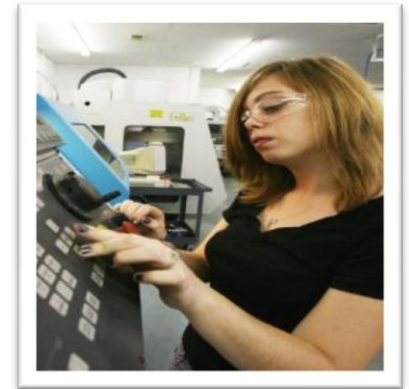
Career Ready: the level of preparation (core academic skills, employability skills and technical, job-specific skills) a high school graduate needs in order to proceed to the next step in a chosen career, whether that is postsecondary coursework, industry certification, or entry into the military or workforce.



College/Career-Readiness Goals

Increase the percentage of students who are college- and career-ready from 34% (16,320 students) to 67% (32,160 students) by 2015.

Increase the Averaged Freshman Graduation Rate from 76% (36,480 students) to 90% (43,200 students) by 2015.



College/Career-Readiness Measures

College-Ready

(1 Point)

A student must meet benchmarks on one of the following:

ACT

or

COMPASS

or

KYOTE

Career-Ready

(1 Point)

A student must meet benchmarks on one from each of the following columns:

**Career-Ready
Academic**

WorkKeys
or
ASVAB

**Career-Ready
Technical**

KOSSA
or
Industry
Certificate
or
JROTC
Certificate
of Training

College- & Career-Ready

(1.5 Points)

A student must meet benchmarks on one from each of the following columns:

**Career-Ready
Academic**

ACT
or
COMPASS
or
KYOTE

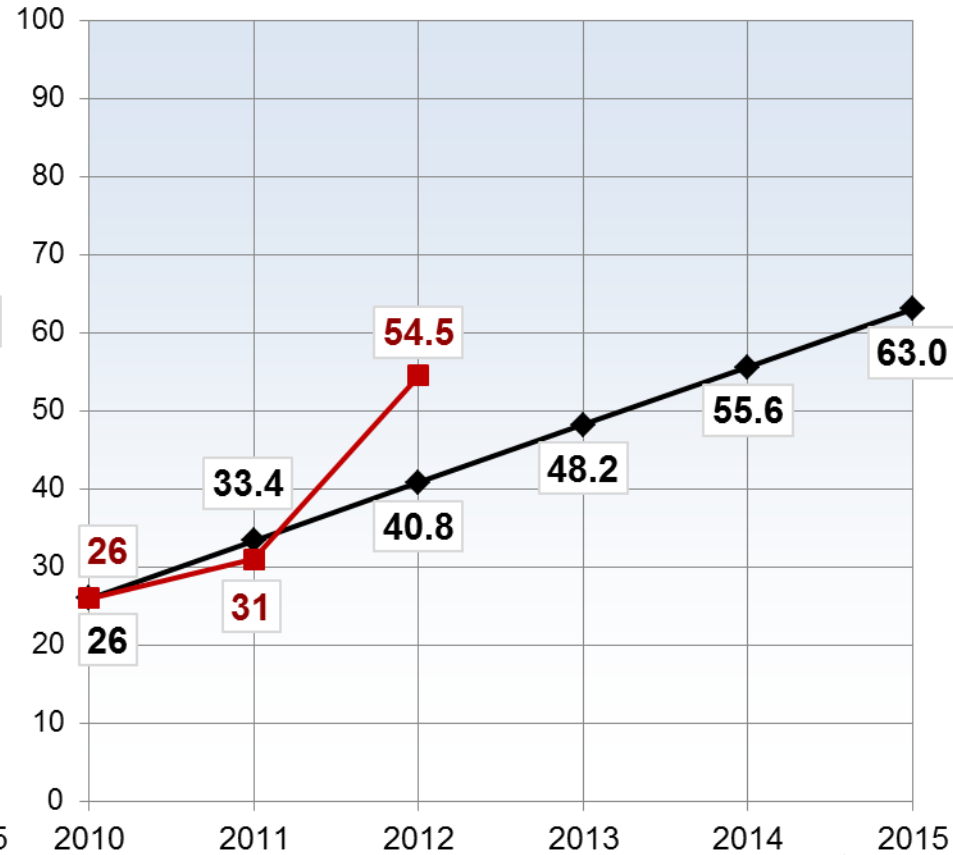
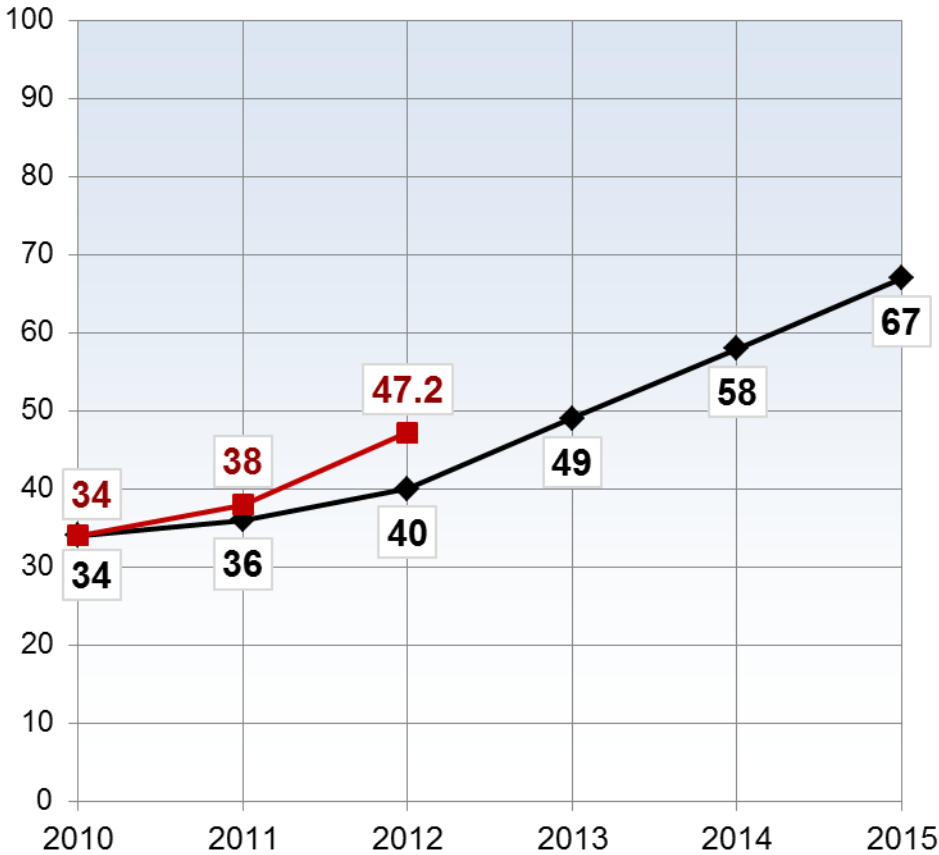
**Career-Ready
Technical**

KOSSA
or
Industry
Certificate
or
JROTC
Certificate
of Training

College/Career-Readiness Trajectories

KY

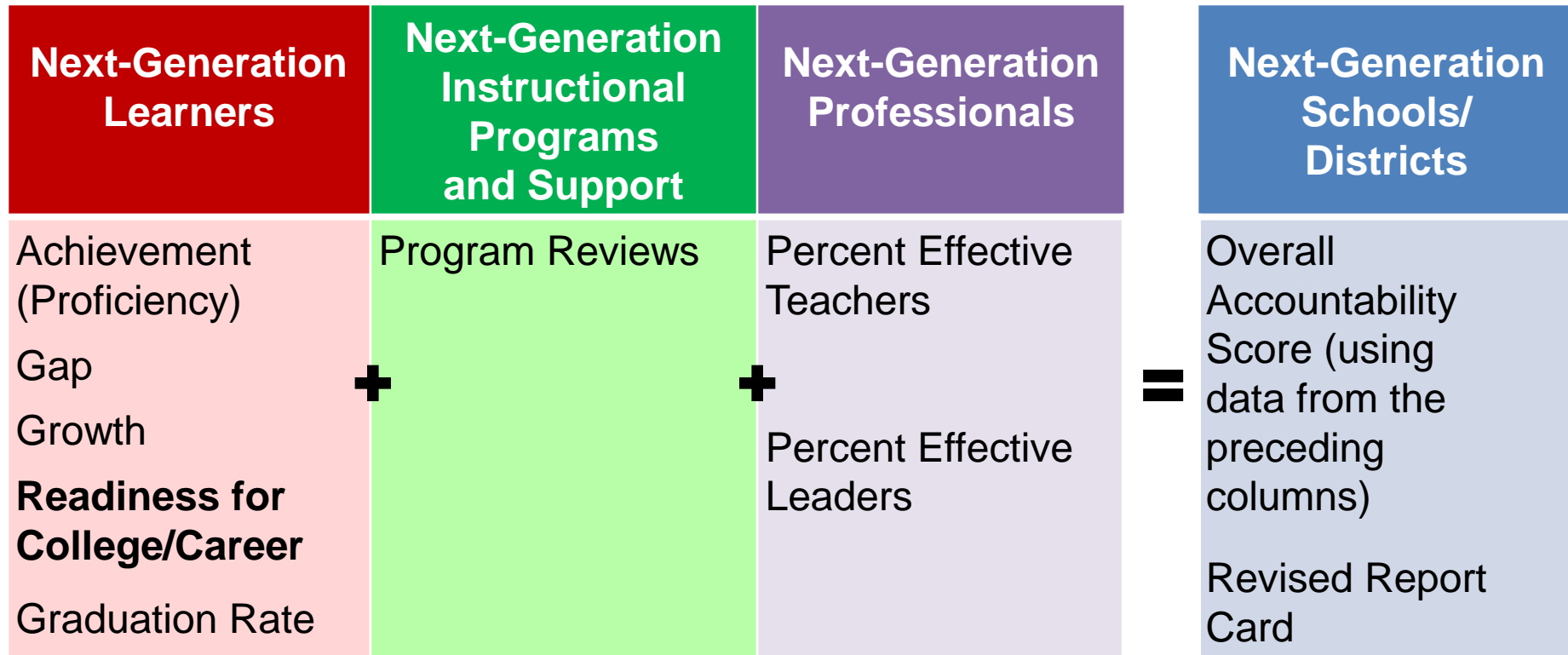
Adair Co.



◆ Target ■ Actual



Unbridled Learning Accountability System



Next-Generation Learners (weights shown in %)	Achievement	Gap	Growth	College/Career Readiness	Grad Rate	Total
Elementary	30	30	40	N/A	N/A	100
Middle	28	28	28	16	N/A	100
High	20	20	20	20	20	100

College/Career-Readiness Strategies

- Collection and use of data:
Persistence to graduation
- Targeted interventions
- Course and assessment alignment
- Unbridled Learning accountability model
- **College and career advising**
- Career readiness pathways
- Acceleration (AdvanceKY, Project Lead the Way, Early College Designs)
- Priority schools



Individual Learning Plan (ILP) Components

1.

- ILP Homepage
- Career Cruising
- Careers that Interest Me
- Schools that Interest Me
- Scholarships & Financial Aid
- Assessment Results
- Goals & Plans
- Activities & Experiences
- Awards & Recognitions
- Course of Study
- Learning Services
- Special Tools:
- Resume Builder
- Printer-Friendly Version
- Go to KHEAA.com
- Logout

Welcome Amanda

ILP Completion Status [View Details](#)

Last Logon: 1/24/2013 3:08:00 PM

Inbox For: Amanda Johnston

Sender	Subject	Date
Welcome!	Welcome to Your ILP!	9/1/2006



Quick Links

- » [Things](#)
- » [Personal P](#)
- » [Educationa](#)
- » [Advisemen](#)
- » [Annual ILP](#)



My Documents

The My Docu you to uploa files in your



My Journal

2.

Careers Main Assessments Careers Schools Employment ILP Sea

Explore Careers

Search for Careers

Enter a career name:

Search by Index	Use the alphabetical index to quickly find the careers you're looking for.
Search by School Subject	Pick a school subject and see which careers it leads to.
Kentucky Career Clusters	Explore occupations using Kentucky Career Clusters.
Search by Cluster	Select an occupation cluster and explore the careers within it.
Career Selector	Search for careers based on a variety of criteria.
Military Careers	Learn more about occupations in the military.
Explore Industries	Explore labor market trends and how businesses are grouped.

3.

- Personal Information
- Citizenship & Residence
- Background
- Academic History
- College Information
- Interests & Talents
- Military Service
- Corporate & Volunteer Experience
- Start Over
- View Results

UNBRIDLED
LEARNING

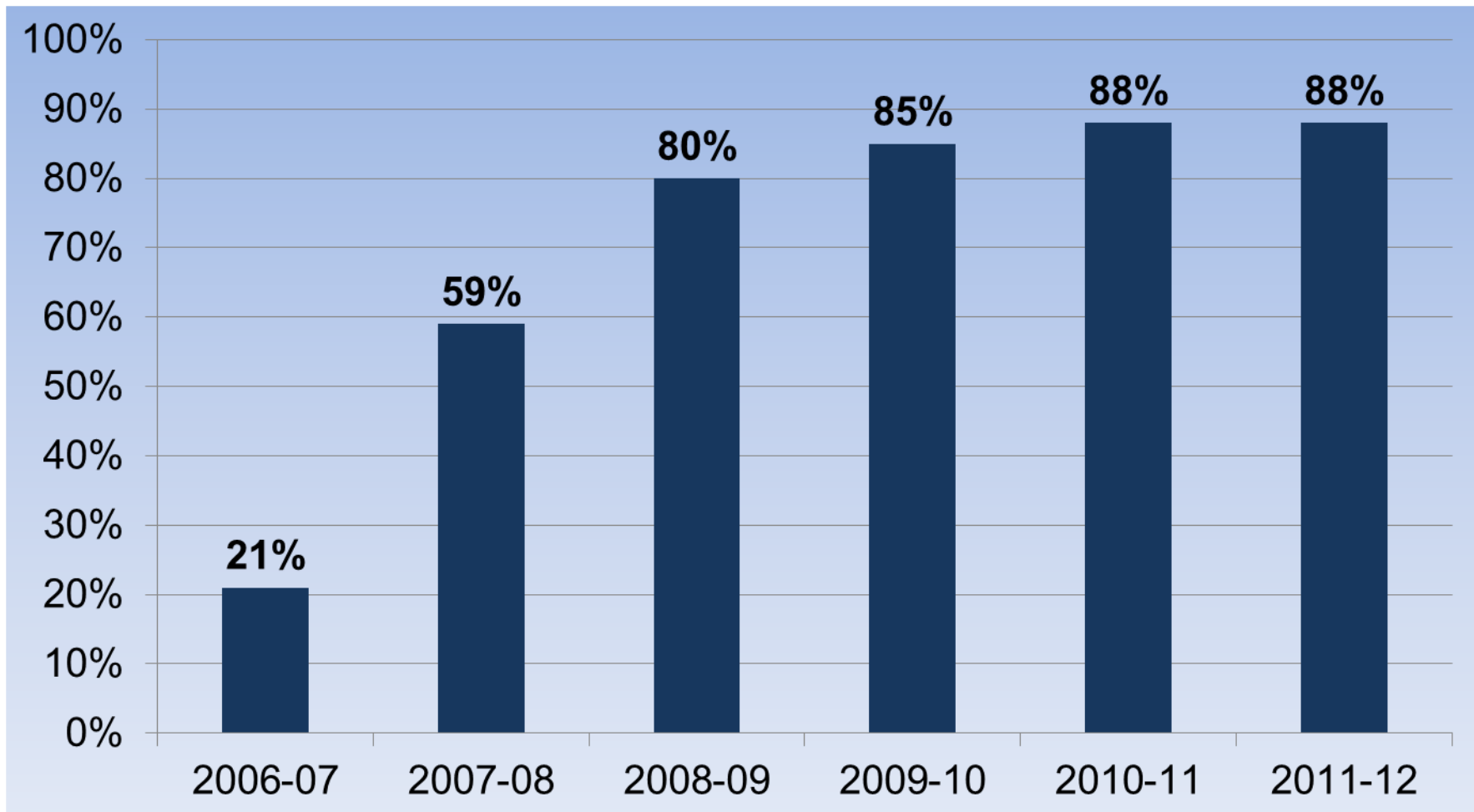
IEP/ILP for Students with Disabilities

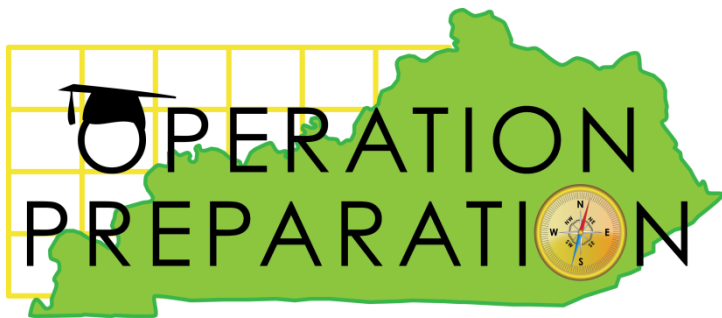
- Accessible website, compatible with screen reader
- IEP transition planning must align to the ILP
- Training for transition consultants provided to ensure all parties are trained and fully engaged in using the ILP
- Correlation document available (example below)

Transition Domain: Self-determination

IEP Transition Activity or Skill	NASET National Standard/ Quality Indicator	ILP Tool Feature/Component
<p>Practice choice-making skills in identifying preferences related to various adult domains (e.g., employment, postsecondary education/training, community participation, independent living).</p> 	<p>Career Preparatory 2.1.1 Schools and community partners offer courses, programs, and activities that broaden and deepen youths' knowledge of careers and allow for more informed postsecondary education and career choices.</p> <p>Youth Development and Youth Leadership 3.1.1 Youth are able to explore various roles and identities, promoting self-determination. 3.2.4 Youth participate in varied activities that encourage the development of self-determination and self-advocacy skills.</p>	<p>Explore Assessments</p> <ul style="list-style-type: none"> • Complete Career Matchmaker Interest assessment • Save Career Matchmaker results to the ILP <p>Explore Careers</p> <ul style="list-style-type: none"> • Use Career Selector search tool to find careers based on a variety of criteria <p>Explore career profiles</p> <ul style="list-style-type: none"> • Save Careers of Interest to the ILP <p>Explore Schools</p> <ul style="list-style-type: none"> • Use School Selector search tools to find undergraduate, graduate, and career & technical schools • Save Schools of Interest to the ILP 

Individual Learning Plan (ILP) Usage





College/Career Readiness Advising Month
March 2013

Close the Deal

- Initiative of Lt. Gov. office in cooperation with KDE
- Targets seniors at high schools with low college-going rate

- Initiative of Kentucky Department of Education (KDE) and Department of Workforce Development
- Partners include:
 - Area Health Education Agencies
 - Kentucky Masons – Masonry Matters



Career Pathways Bill SB 38 (2012)

AN ACT relating to career pathways, making an appropriation therefor, and declaring an emergency.¶

Be it enacted by the General Assembly of the Commonwealth of Kentucky:¶

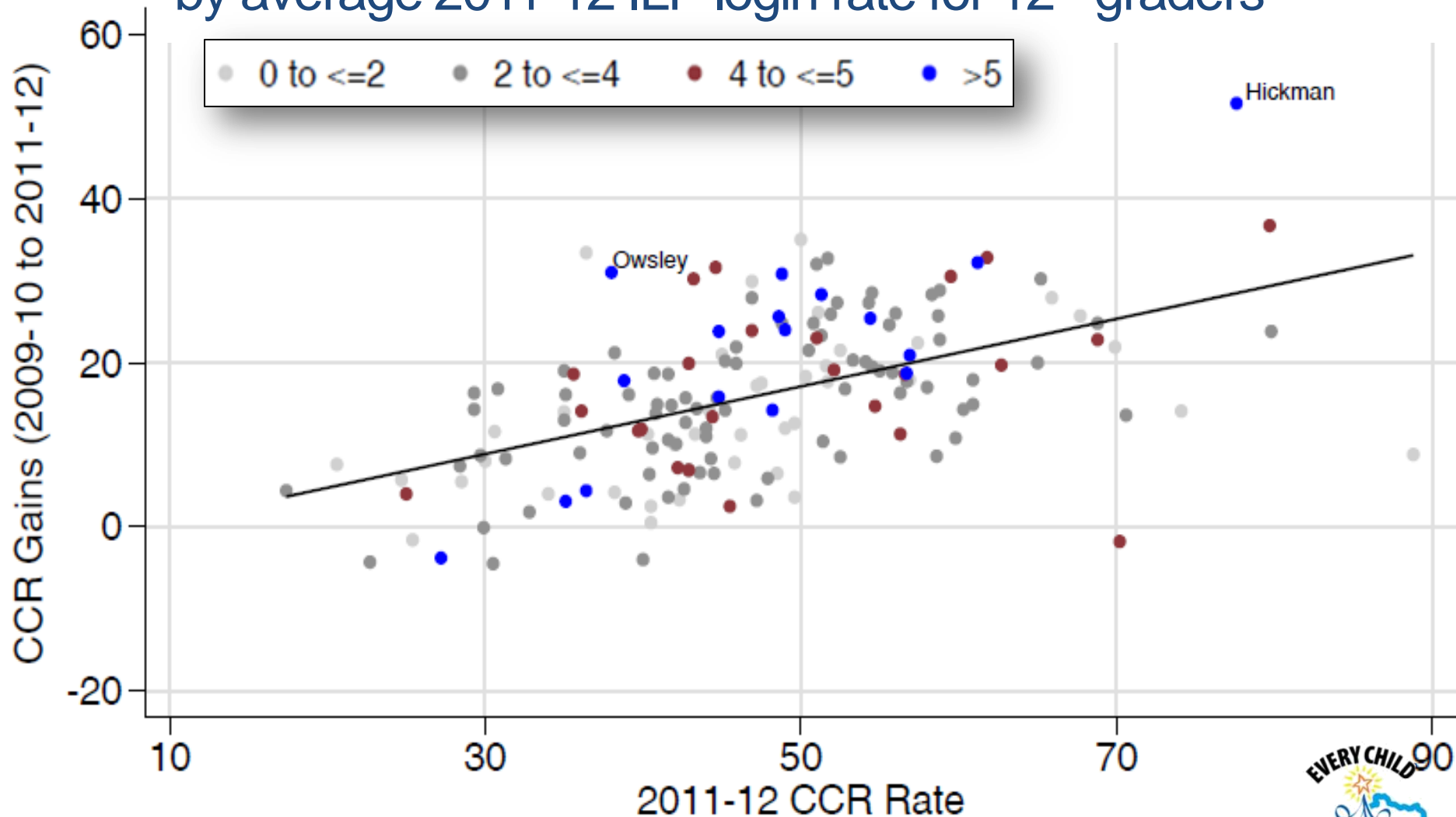
➔ Section 1. ...KRS 158.812 is amended to read as follows:¶

(1) → It is the intent of the General Assembly to provide rigorous academic and career and technical education programs that are relevant for all students and that encourage at-risk students to graduate from high school prepared to enter postsecondary education institutions or the workforce with needed skills.¶

UNBRIDLED
LEARNING

Progress to College/Career-Readiness 2015

by average 2011-12 ILP login rate for 12th graders



UNBRIDLED
LEARNING

Sources: Kentucky Department of Education and Career Cruising

